

TRACK RECORD

CBRE
RESIDENTIAL

TRACK RECORD
BEIJING
2009



Fuwah Lishan Project (暂用名:利山大厦)

Developer: Fuwah International Group
Location: Between Chang'an Street and Jinbao Street
GFA: 182,143 s.q.m.
Type: Luxury Apartment
Date : 2008
Assignment: Consultancy



Park Hyatt Residences (柏悦居)

Developer: Beijing Yintai Property Co., Ltd.
Location: Chang'an Avenue and 3rd Ring Road
GFA: 350,000 s.q.m.
Type: Luxury Apartment
Date : 2006 - 2007
Assignment: International Sales Agent



The Seasons (季景沁园)

Developer: Keppel Land
Location: WangJing in Chaoyang District
GFA: 330,000 s.q.m.
Type: Apartment
Date : 2003 - 2008
Assignment: Joint Sole Agent



Palm Springs (棕榈泉国际公寓)

Developer: Beijing Century Sun Real Estate Development Co., Ltd.
Location: South Gate of Chaoyang Park
GFA: 280,000 s.q.m.
Type: Luxury Apartment
Date : 2002 - 2003
Assignment: Consultancy

TRACK RECORD

CBRE
RESIDENTIAL

TRACK RECORD
BEIJING
2009



Scenic Place II (蝶翠华庭二期)

Developer: Beijing Guanglu Real Estate
Development Co., Ltd.
Location: Guang'Anmenwai, Beijing
GFA: 430,000 s.q.m.
Type: Apartment
Date : 2002
Assignment: Consultancy



Pacific Oriental (东方太平洋)

Developer: JianGuo Real Estate
Development Co., Ltd.
Location: Chang'an Avenue, Beijing
GFA: 50,000 s.q.m.
Type: Apartment
Date : 2005
Assignment: Sole Agent



Jian Center (华普中心)

Developer: Jian Enterprise Group
Location: Northwest corner of Dongsishitiao
Bridge, Beijing
GFA: 260,000s.q.m.
Type: Apartment
Date : 2001 - 2002
Assignment: Sole Agent

TRACK RECORD

CBRE
RESIDENTIAL

TRACK RECORD
SHANGHAI
2009



Residence 8, Shanghai

Developer: Shanghai Apartment (Mauritius) Company Limited
TGFA (sq.m.): 39,940
Price (USD/sq.m.): 10,000 and above
CBRE's Role: Marketing Consultant & Sole Asia Agent (2007)



Prince Hills, Great Apartment, Shanghai

Developer: Shanghai Yuchang Real Estate Development Co., Ltd
TGFA (sq.m.): 29,803
Price (USD/sq.m.): 8,000 and above
CBRE's Role: Sole Agent (2007)



Rhapsody (ex Ascott Shanghai Pudong)

Developer: Hua Xin Residences Pte Ltd (West Tower), and Shanghai Rui Yuan Real Estate Development Co. Ltd (East Tower)
TGFA(sq.m.): 32,966
Price (USD/sq.m.): 5,000 and above
CBRE's Role: Marketing Consultant Agent and Exclusive Sales Agent (2008)



Venezia, Shanghai

Developer: Shanghai Baihui Real Estate Development Co., Ltd
TGFA: 340,000 residential+160,000 Office/Retail
Price (USD/sq.m.): 5,000 and above
Role: Marketing & Sole Agent (2007)

TRACK RECORD

CBRE
RESIDENTIAL

TRACK RECORD
SHANGHAI
2009



Wellington Garden, Shanghai

Developer: WHARF Group
TGFA: 42,000sqm
Price (USD/sq.m.): 5,000 and above
CBRE's Role: Joint Sole Agent (2004)



Baguio Mansion, Shanghai

Developer: ASPAC Land Development
(Shanghai) Co., Ltd
TGFA: 30,000
Price (USD/sq.m.): 3,000 and above
Role: Sole Agent (2006)



Top Glory Seaview, Shanghai

Developer: Top Glory International
Holdings Ltd.
TGFA: 116,000
Price (USD/sq.m.): Nil
Role: Sole Marketing Consultant
(2004-2005)



Sheshan Golf Villa

Developer: Unifront Enterprise Development Co. Ltd
TGFA (sq.m.): 66,600
Price (USD/sq.m.): 3,000 and above
CBRE's Role: Sole Agent
(2005-2006)



TRACK RECORD

CBRE
RESIDENTIAL

TRACK RECORD
SHANGHAI
2009

CBRE
CB RICHARD ELLIS



Chevalier Place

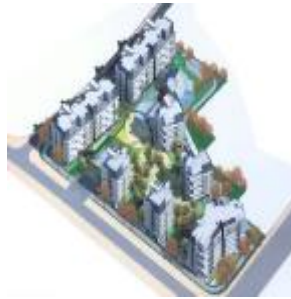


Developer: Shanghai Chon Main Real Estate Development Co. Ltd
Chevalier (HK) Ltd

TGFA (sq.m.): 30,000

Price (USD/sq.m.): 4,000

CBRE's Role: Joint Sole Agent (2005)



Magy Garden



Developer: Shanghai MaiQi Real Estate Development Co. Ltd
Shanghai Urban Development Group

TGFA (sq.m.): 31,000

Price (USD/sq.m.): NIL

CBRE's Role: Sole Marketing Consultant
(2003-2005)



Merry Tower

Developer: Poppins Development (Shanghai) Limited / Great China Holding Limited
Shanghai Office

TGFA (sq.m.): 7,000

Price (USD/sq.m.): 2,500

CBRE's Role: Sole Agent (2004)



The Emerald Garden

Developer: Da Da Development (Shanghai) CORP

TGFA (sq.m.): 8,900

Price (USD/sq.m.): 9,500

CBRE's Role: Joint Sole Agent (2004)

TRACK RECORD

CBRE
RESIDENTIAL

TRACK RECORD
SHANGHAI
2009



New Westgate Garden



Developer: Citic Pacific China Holdings Limited
TGFA (sq.m.): 100,000
Price (USD/sq.m.): 4,000
CBRE's Role: Joint Sole Agent
& Overseas Agent (2004)



Arcadia



Developer: Sun Hung Kai Properties
(Shanghai) Co. Ltd
TGFA (sq.m.): 60,000
Price (USD/sq.m.): 3,000
CBRE's Role: Joint Sole Agent
(2003-2004)



Dong Jiao Villas, Shanghai

Developer: Shanghai Pucheng Real Estate Co. Ltd.
Shanghai Dongchang Investment
Development Co.Ltd
TGFA (sq.m.): 22,000
Price (USD/villa): 1,000,000 ~3,750,000
CBRE's Role: Marketing & Sole Agent
(2002 till now)



Jing'an Hyatt



Developer: Shanghai Kohuang Real Estate
Development Co. Ltd
TGFA (sq.m.): 65,000
Price (USD/sq.m.): 2,000
CBRE's Role: Sole Agent (2003-2004)

CBRE
CB RICHARD ELLIS

TRACK RECORD

CBRE
RESIDENTIAL

TRACK RECORD
SHANGHAI
2009



La Residence

Developer: La residence Development
(Shanghai) Co. Ltd

TGFA (sq.m.): 15,000

Price (USD/sq.m.): 2,000

CBRE's Role: Sole Agent (2001-2002)



Edifice



Developer: Summit Property Development
Co. Ltd (Shanghai)

TGFA (sq.m.): 85,000

Price (USD/sq.m.): 1,500-2,500

CBRE's Role: Overseas Agent (2002)



International Leader

FORTE 复地

Developer: Xinye (Forte Land Co. Ltd)

TGFA (sq.m.): 32,000

Price (USD/sq.m.): 1,800

CBRE's Role: Sole Agent (2002-2003)



Xu Hui Garden

Developer: Shanghai Hangxin Real
Estate Co.Ltd.

TGFA (sq.m.): 280,000

Price (USD/sq.m.): 1,000

CBRE's Role: Joint Sole Agent (2001)

CBRE
CB RICHARD ELLIS

TRACK RECORD

CBRE
RESIDENTIAL

TRACK RECORD
SHANGHAI
2009



Central Residences



Developer: Kerry Properties Development Management (Shanghai) Co. Ltd.
TGFA (sq.m.): 100,000
Price (USD/sq.m.): 3,000
CBRE's Role: Joint Sole Agent (Shanghai)
Sole Agent (Singapore, Taiwan) (2001)



Guo Ji Hua Cheng

Developer: Gaochang Real Estate
TGFA (sq.m.): 100,000
Price (USD/sq.m.): 6,000
CBRE's Role: Marketing Consultant & Sole Agent (2007 till now)

Operation out of Shanghai



Xixi Resort Residence

Developer: Westbrook Investment
TGFA (sq.m.): 30,000
Price (USD/sq.m.): 5,000 and above
CBRE's Role: Marketing Consultant & Sales Agent (2008)



The Coastal Residence Suzhou/ The Coastal International Center

Developer: Suzhou New Development Investment Co., Ltd
TGFA (sq.m.): 13,600 residential
+31,000 office +42,500 hotel
Price (USD/sq.m.): 3,500 and above
CBRE's Role: Exclusive Sales Agent (2008)

TRACK RECORD

CBRE
RESIDENTIAL

TRACK RECORD
SHANGHAI
2009



Beihai Hanyu Tower, Beihai Guangxi

Developer: Beihai Hanyu Real Estate
Development Co. Ltd.

TGFA (sq.m.): 60,000

Price (USD/ sq.m.): 1,200 and above

CBRE's Role: Marketing Consultancy and
Exclusive Sales Agent (2009)



Kunming Golf Villa

Developer: Kunming Dianchi Golf Co. Ltd.

TGFA (sq.m.): 120,000

Price (USD/sq.m.): 1,200

CBRE's Role: Marketing Consultant & Sole Agent
(Excluding Kunming , 2004)



Legend City, Hangzhou

Developer: Jiangong Real Estate
Development Group

TGFA: 42,000

Price (USD/sq.m.): 3,500

Role: Marketing Consultant & Overseas Sole
Agent (2005-2006)

TRACK RECORD

TIANJIN



Tianjin Centre (天津中心)

Developer: Tianjin Forte Puhe Development Co., Ltd.
Location: Heping District, Tianjin
GFA: 100,000 s.q.m.
Type: Luxury Apartment
Date: 2006 - 2008
Assignment: Sole Agent

QINGDAO



Capland Center (凯悦中心)

Developer: Capland Property Group Ltd.
Location: Yan'erdao Road No.8, Shinan District
GFA: Approximately 100,000 s.q.m.
Type: Residential, Office, Retail
Date: 2007 - 2008
Assignment: Sole Agent



Hyatt Residential Project (海景公寓)

Developer: Qingdao Haijing (International) Hotel Development Co., Ltd.
Location: Eastern Donghai Road
GFA: Approximately 40,000 s.q.m.
Type: Residential, Hotel, Retail
Date: 2008 - 2009
Assignment: Sole Agent

DALIAN



Dalian Times Square – Dalian (大连时代广场)

Developer: Dalian Times Square Development.
Location: West of Furama hotel, Zhongshan District
GFA: 174,000 s.q.m.
(Residential area 121,000sqm)
Type: High-end Apartment
Date: 2007 - 2008
Assignment: Joint Sole Agent

CBRE
RESIDENTIAL

TRACK RECORD

TIANJIN /
QINGDAO /
DALIAN

2009

CBRE
CB RICHARD ELLIS